

# GEN AT A GLANCE

The **Global Energy Network**

## What is GEN?

- Platform for energy leaders.
- Catalyst to facilitate innovation in energy.
- Think-Tank for energy related issues and policies.
- Network of scholars, research centers and programs within USC & beyond.
- Emphasizes multi-disciplinary work.



Mr. Richard Stagemaler, USC Life Trustee, Chairman Emeritus of Unocal Co. and GEN Advisory Board Member with Dr. Fred Aminzadeh, Managing Director of Global Energy Network

## Objective

- Focus on making a positive impact on energy-related technologies and policies.
- Raise \$20 million by 2020 for relevant projects.

## Highlight of GEN

It is a unique center with a multidisciplinary program that involves experts from:

- Viterbi School of Engineering
- Price School of Public Policy
- Marshall School of Business
- USC Energy Institute
- Department of Earth Sciences
- Southern California Earthquake Center (SCEC)

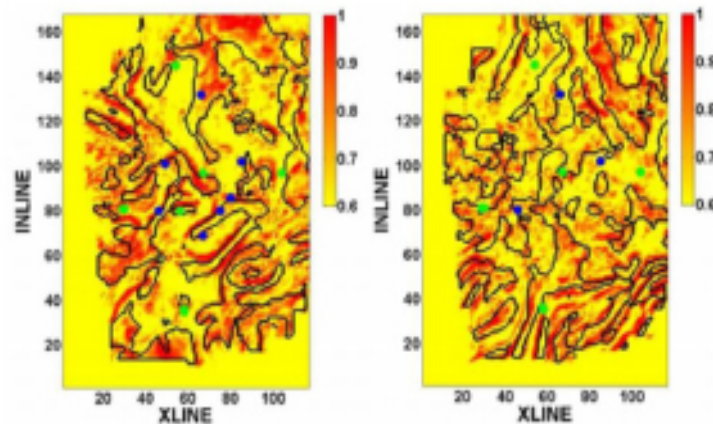
Areas of focus include:

- Fossil Energy
- Renewable
- Geothermal
- Environment and Safety
- Smart Grid & Big Data
- Water Resources

## Relevant Work

### Discontinuity Integrated FZI Maps

By using microseismic data, GEN has developed a method for characterizing the fracture network in shale reservoirs.

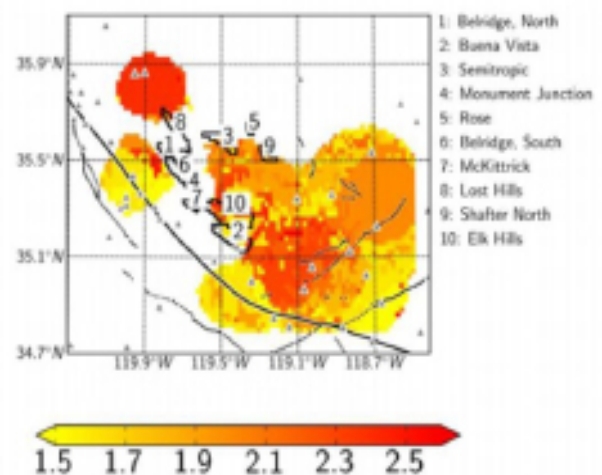


Maity, Aminzadeh (2015)

## Relevant Work

### Distribution of “Completeness” Magnitude along the San Andreas Fault & the existing Oil Fields in San Joaquin Valley, California

A new technique to distinguish between the induced and triggered seismicity from the completeness/b-value has been developed. This information overlaid on known faults and the existing oil fields is useful.



Goebel, Aminzadeh (2014)

The **Global Energy Network**

## Goals of GEN

- To form a partnership between USC and member companies for assessing and addressing the long term needs of energy & related industries
- To create a platform for energy leader to interact with peers & top scholars in energy, and to act as a catalyst to help innovation in energy
- Generation of a workforce development & training function to fulfill professional training needs in all levels
- Portfolio management of multi-disciplinary sponsored energy research programs

## Funding Opportunities

### Corporate Funding:

- Founding Member - \$500,000
- Platinum member - \$200,000
- Gold Member - \$100,000
- Silver Member - \$ 50,000
- Member - \$ 20,000

For membership benefits visit [gen.usc.edu/funding/](http://gen.usc.edu/funding/)

### GEN 2020:

For any of the projects in the GEN2020 portfolio, [gen.usc.edu/gen2020/](http://gen.usc.edu/gen2020/) , funding can be earmarked to a specific program or a general gift contribution can be made to [ignite.usc.edu/project/201](http://ignite.usc.edu/project/201)

### Consortium Funding:

- Reservoir Monitoring Consortium (RMC)  
([rmc.usc.edu/](http://rmc.usc.edu/))
- Induced Seismicity Consortium (ISC)  
([isc.usc.edu/](http://isc.usc.edu/))
- Center for Geothermal Studies (CGS)  
([cgs.usc.edu/](http://cgs.usc.edu/))

Funding Provided to any of these Consortium will also be directed towards the GEN2020 initiative

The **Global Energy Network**

**GEN is a...**

- **Consortium** to assess and address long-term issues and needs of energy and related industries
- **Platform** for energy leaders to interact with peers and top scholars in energy
- **Catalyst** to facilitate innovation in energy
- **Workforce development** and training program to fulfill professional training needs at all levels
- **Go-to Think Tank** for information and analysis on energy-related issues
- **Partnership** between USC and member companies (MC)
- **Portfolio** of multi-disciplinary sponsored energy research programs, comprising:

**RMC**

Reservoir Monitoring Consortium

<http://rmc.usc.edu/>

**ISC**

Induced Seismicity Consortium

<http://isc.usc.edu/>

**CGS**

Center for Geothermal Studies

<http://cgs.usc.edu/>

For opportunities to support GEN please visit [gen.usc.edu/funding/](http://gen.usc.edu/funding/) or contact Fred Aminzadeh at [faminzadeh@usc.edu](mailto:faminzadeh@usc.edu) and Michael D. Orosz at [mdorosz@isi.edu](mailto:mdorosz@isi.edu)